



Zurn One Sensor Wall Hung Toilet System with 1.28 GPF EcoVantage® Hydro•X® Power Sensor Flush Valve Z.WC.S.HYD

TAG _____

ARCHITECTURAL & ENGINEERING SPECIFICATION

Complete EcoVantage® high efficiency 1.28 gpf sensor actuated, hydro-powered, wall mounted commercial water closet system with ZER6000AV-HET-HYD exposed, sensor activated with manual override button chrome-plated closet diaphragm flushometer for either left or right hand supply, Z5955SS-EL open front commercial toilet seat, Z5615-BWL wall mounted vitreous china water closet with Z5977-NEO NeoSeal outlet sealing gasket assembly kit and Z5610-NUT-EXT-KIT manufactured by Zurn.

PRODUCT FEATURES

- 1.28 gpf (gallons per flush)
- Wall mounted elongated front rim top spud toilet
- High efficiency siphon jet flush action
- 2-1/8" fully glazed trapway
- Large water spot - 12' x 10'
- Vitreous china wall bowl construction
- Static weight load of 1000 lb*
- *Not intended for bariatric use
- Gear-operated flush valve with hydro-powered operation
- Heavy-duty construction body with a highly polished chrome-plated finish
- Triple filtered AquaVantage® diaphragm, gaskets and seals are made of chemical-resistant thermoplastic elastomer
- High pressure vacuum breaker
- Adjustable tailpiece
- True mechanical override button
- Control stop with internal siphon-guard protection, vandal-resistant stop cap, sweat solder kit, cast wall flange with set screw
- Open front, elongated, white commercial toilet seat with SS check hinges
- NeoSeal® outlet gasket assembly
- 20% water savings over standard 1.6 gpf system

COMPLIANCE AND CERTIFICATION:

Meets the American Disabilities Guidelines and ANSI A117.1 requirements when installed according to these requirements.

- Fixture - Complies with ASME A119.2 / CSA B45.1
- Flush Valve - Complies with ASSE 1037 / ASME A112.1037 / CSA B125.37



This product should be used with a WaterSense labeled counterpart with a compatible flush volume to ensure that the entire system meets the requirements for water efficiency and performance.



ZURN ONE SYSTEM PACKOUT INCLUDES:

FIXTURE - Z5615-BWL:

Vitreous China, 1.1 gpf [4.2 Lpf] or greater high efficiency wall hung toilet with siphon jet flushing action and elongated front rim with 1-1/2" [38mm] top spud

FLUSH VALVE - ZER6000AV-HET-HYD:

Zurn Hydro•X® Power series of sensor flush valves for water closets are designed for reliable, hands-free operation that lasts the life expectancy of a commercial restroom. This hydro-powered sensor flush valve for water closets requires no hard wiring or battery replacement, which means lower installation and maintenance costs. The gear-operated flush valve features a clog-resistant, triple filtered diaphragm. It is sensor activated to support a more hygienic environment by eliminating touch points. Pair with Hydro•X® Power faucets to maximize sustainable restroom goals

Z5955SS-EL:

Elongated, open front white toilet seat with stainless steel check hinges

Z5610-NUT-EXT-KIT:

Retrofit nut kit for extending carrier studs from existing wall

Z5977-NEO:

NeoSeal® gasket kit for wall mounted bowls

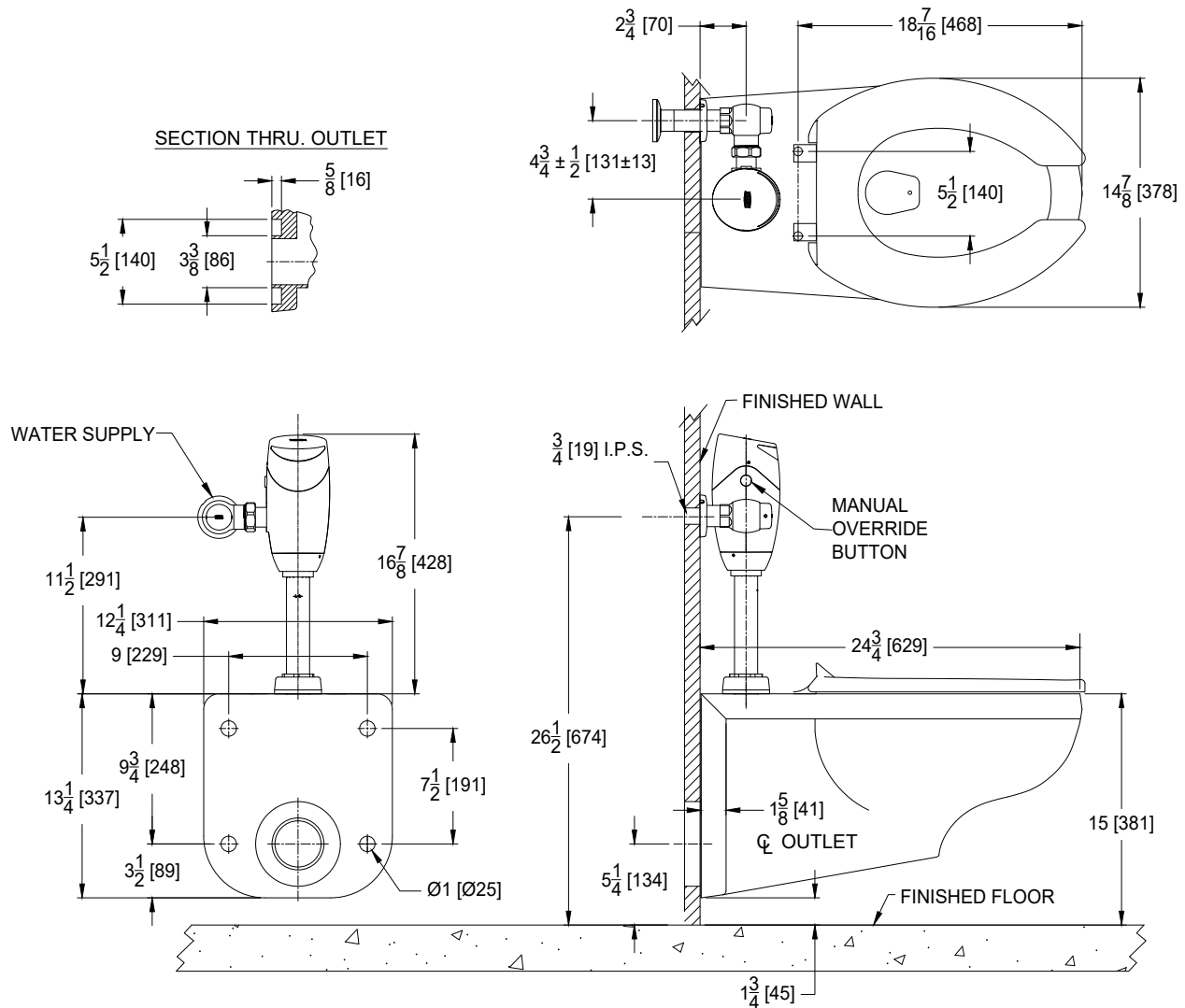
RECOMMENDED CARRIER:

Z1201 or Z1202 EZCarry™ 500 lbs load rated High Efficiency Carrier

ARCHITECTURAL & ENGINEERING APPROVAL

The information contained in this document is subject to change without notice.
Please contact Zurn for most up to date information.

Rough-in / Overview dimensions





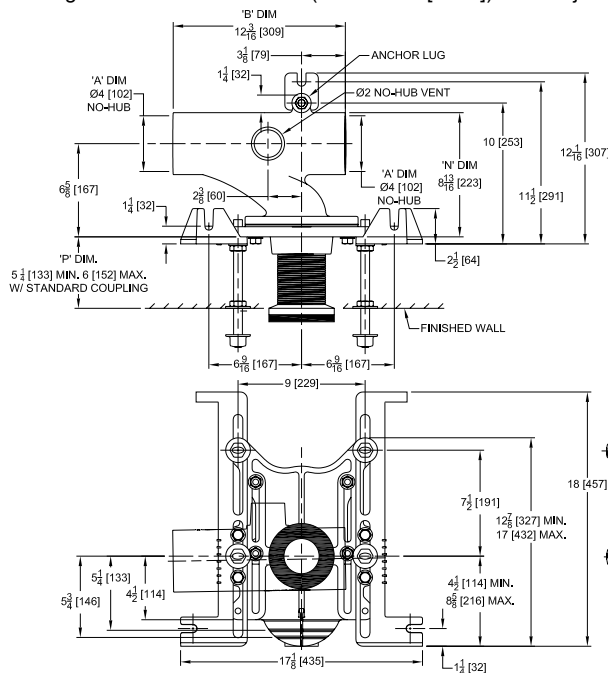
Z1201-N_4

EZCARRY® ADJUSTABLE HORIZONTAL HIGH PERFORMANCE
SIPHON JET NO-HUB WATER CLOSET CARRIER SYSTEM

SPECIFICATION SHEET

TAG _____

Design and Dimensional Data (inches and [mm]) are Subject to Manufacturing Tolerances and Change Without Notice



Product Number	Approx. Wt lbs [kg]
Z1201-NL4	58 [26]
Z1201-NR4	

Note:

1. Z coupling, Min. 'P' Dim Obtainable=2 [51]. EZ-Set™ Coupling, Min. 'P' Dim. Obtainable=4-1/4 [108] or 2-1/16 [52] for 12 [305] NPT.
2. Feet bolted to floor using min. 1/2 [13] dia. anchors.
3. Rear anchor foot required for secure installation.

Z1201-NR4 Illustrated

ENGINEERING SPECIFICATION: ZURN Z1201-N_4

EZCarry® horizontal siphon jet water closet carrier system with high performance waterway and 4" [102mm] no-hub connections. System includes Dura-Coated cast iron main fitting with hydro-mechanically optimized sweep and extended 2" [51mm] vent, adjustable faceplate, QuickFit™ faceplate gasket, floor mounted pre-fab slotted foot supports with top anchoring pre-fab support base, heavy-duty 1/2" [13mm] rear anchor tie down, fixture bolts, trim, stud protectors, bonded "Neo-Seal" gasket, and corrosion resistant, adjustable 3" [76mm] dia. X 6" [152mm] coupling with integral test cap designed to increase flow velocity and line carry. EZCarry® system complies with the requirements of ASME A112.6.1M up to a 500 lbs [227 kg] static load rating.

OPTIONS (Check/specify appropriate options)

- ___ Z1201-NL4 4 [102] No-Hub Left Hand Inlet with Flow to Right
___ Z1201-NR4 4 [102] No-Hub Right Hand Inlet with Flow to Left

PREFIXES

- ___ Z D.C.C.I. System with Zurn ZZ Adjustable Coupling*
___ ZQ D.C.C.I. System with NPT Faceplate, Non-Adjustable Coupling

SUFFIXES

- | | |
|---|---|
| ___ -A Auxiliary Support Assembly (For 'P' Dim. Greater than 18 [457]) | ___ -G Galvanized Cast Iron |
| ___ -CC Corrosion Resistant Cast Iron Coupling (2-1/4 [57] to 12 [305]) | ___ -JC 2 [51] Auxiliary Inlet with 1/8 Bend |
| ___ -CE EZ-Set™ Coupling (NPSM 6 [152], 12 [305] or custom) (NPT 12 [305] or custom) | ___ -M Auxiliary Foot Support (for 'P' Dim. 7 thru 18 [178 thru 457]) |
| ___ -CL Custom Length Standard Coupling with Integral Test Cap (Specify Length 4, 8, 10, 12 [102, 203, 254, 305]) | ___ -RYK17 One Piece Unistrut Pre-Fab Foot |
| ___ -CS 2-1/4 [57] Polymer Coupling with Integral Test Cap | ___ -VP Vandal-Proof Trim |
| ___ -F Floor Mounted, Back Outlet Fixture Support | ___ -X2 2 [51] Carrier Foot Extension Assembly |
| | ___ -X3 3 [76] Carrier Foot Extension Assembly |
| | ___ -45 Finishing Frame for Siphon Jet System |
| | ___ -50 Flush Valve Supply Support for Water Closets |

* Regularly furnished unless otherwise specified.

⚠ **WARNING:** Cancer and Reproductive Harm - www.P65Warnings.ca.gov

⚠ **ADVERTENCIA:** Cáncer y daño reproductivo - www.P65Warnings.ca.gov

⚠ **AVERTISSEMENT:** Cancer et effets néfastes sur la reproduction - www.P65Warnings.ca.gov

Zurn Industries, LLC | Specification Drainage Operation
1801 Pittsburgh Avenue, Erie, PA USA 16502, Ph. 855.663.9876

In Canada | Zurn Industries Limited
7900 Goreway Drive, Unit 10, Brampton, Ontario L6T 5W6, Ph. 877.892.5216

www.zurn.com

Rev. N
Date: 06/12/24
C.N. No. 146025
Patent zurn.com/patents
Prod. | Dwg. No. Z1201-N_4

Page 1 of 1



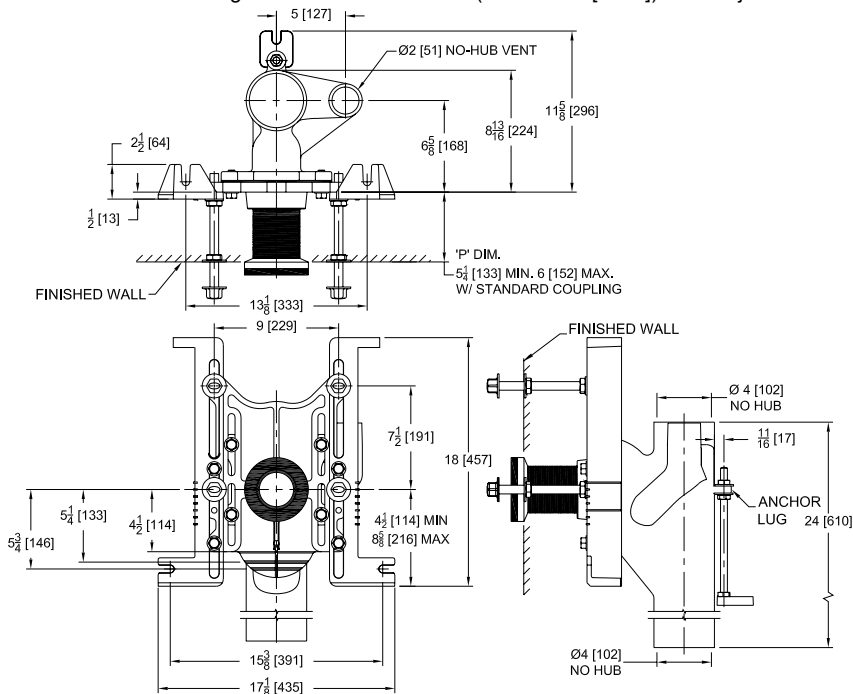
Z1202-N4

EZCARRY® ADJUSTABLE VERTICAL HIGH PERFORMANCE
SIPHON JET NO-HUB WATER CLOSET CARRIER SYSTEM

SPECIFICATION SHEET

TAG _____

Design and Dimensional Data (inches and [mm]) are Subject to Manufacturing Tolerances and Change Without Notice



Product Number	Approx. Wt. lbs [kg]
Z1202-N4	73 [33]

Note:

1. Z Coupling, Min. 'P' Dim. Obtainable = 2 [51]. EZ-Set™ Coupling, Min. 'P' Dim. Obtainable = 4-1/4 [108] or 2-1/16 [52] for 12 [305] NPT
2. Feet bolted to floor using min. 1/2 [13] dia. anchors.
3. Rear anchor foot assembly required for secure installation.
4. 2 [51] No-Hub vent connection regularly furnished on right hand side. Left hand available when specified (Suffix -VL)
5. Auxiliary inlet available right (-JR) or left (-JL) or both sides (-JJ) when specified.

Z1202-N4 Illustrated

ENGINEERING SPECIFICATION: ZURN Z1202-N4

EZCarry® vertical siphon jet water closet carrier system with high performance waterway and 4" [102mm] no-hub connections. System includes Dura-Coated cast iron main fitting with hydro-mechanically optimized sweep and extended 2" [51mm] vent, adjustable faceplate, QuickFit™ faceplate gasket, floor mounted pre-fab slotted foot supports with top anchoring pre-fab support base, heavy-duty 1/2" [13mm] rear anchor tie down, fixture bolts, trim, stud protectors, bonded "Neo-Seal" gasket, and corrosion resistant, adjustable 3" [76mm] dia. X 6" [152mm] coupling with integral test cap designed to increase flow velocity and line carry. EZCarry® system complies with the requirements of ASME A112.6.1M up to a 500 lbs [227 kg] static load rating.

OPTIONS (Check/specify appropriate options)

____ Z1202-N4 4 [102] No-Hub Stack, Single Inlet, 2 [51] Right Hand Vent

PREFIXES

____ Z D.C.C.I. System with Zurn ZZ Adjustable Coupling*
____ ZQ D.C.C.I. System with NPT Faceplate, Non-Adjustable Coupling

SUFFIXES

____ -A	Auxiliary Support Assembly (For 'P' Dim. Greater than 18 [457])	____ -JL	2 [51] Left-Hand Auxiliary Inlet
____ -CC	Corrosion Resistant Cast Iron Coupling (2-1/4 [57] to 12 [305])	____ -JR	2 [51] Right-Hand Auxiliary Inlet
____ -CE	EZ-Set™ Coupling (NPSM 6 [152], 12 [305] or custom) (NPT 12 [305] or custom)	____ -M	Auxiliary Foot Support (for 'P' Dim. 7 thru 18 [178 thru 457])
____ -CL	Custom Length Standard Coupling with Integral Test Cap (Specify Length 4, 8, 10, 12 [102, 203, 254, 305])	____ -RYK17	One Piece Unistrut Pre-Fab Foot
____ -CS	2-1/4 [57] Polymer Coupling with Integral Test Cap	____ -VL	Left Hand Vent Connection
____ -F	Mounted, Back Outlet Fixture Support	____ -VP	Vandal-Proof Trim
____ -G	Galvanized Cast Iron	____ -X2	2 [51] Carrier Foot Extension Assembly
____ -JJ	Two 2 [51] Auxiliary Inlets	____ -X3	3 [76] Carrier Foot Extension Assembly
		____ -45	Finishing Frame for Siphon Jet Water System
		____ -50	Flush Valve Supply Support for Water Closets

* Regularly furnished unless otherwise specified.

⚠ **WARNING:** Cancer and Reproductive Harm - www.P65Warnings.ca.gov

⚠ **ADVERTENCIA:** Cáncer y daño reproductivo - www.P65Warnings.ca.gov

⚠ **AVERTISSEMENT:** Cancer et effets néfastes sur la reproduction - www.P65Warnings.ca.gov

Zurn Industries, LLC | Specification Drainage Operation
1801 Pittsburgh Avenue, Erie, PA 16502, Ph. 855.663.9876

In Canada | Zurn Industries Limited
7900 Goreway Drive, Unit 10, Brampton, Ontario L6T 5W6, Ph. 877.892.5216

www.zurn.com

Rev. N
Date: 07/23/24
C.N. No. 146183
Patent zurn.com/patents
Prod. | Dwg. No. Z1202-N4

Page 1 of 1

